

Stop the Murdoch (Flt 93) Memorial Blogburst: QiblaLocator confirms Mecca orientation of Flight 93 crescent

Description



Reader Max K. found another Islamic website with a Mecca-direction calculator. It can be used to construct yet another graphical demonstration that the Flight 93 memorial points to Mecca.

Muslims face Mecca for prayer, with the direction to Mecca calculated by the great circle method. Enter your street address into the search field at QiblaLocator.com and it brings up a Google map with a red line showing the Muslim prayer-direction (or “qibla”) from your home.

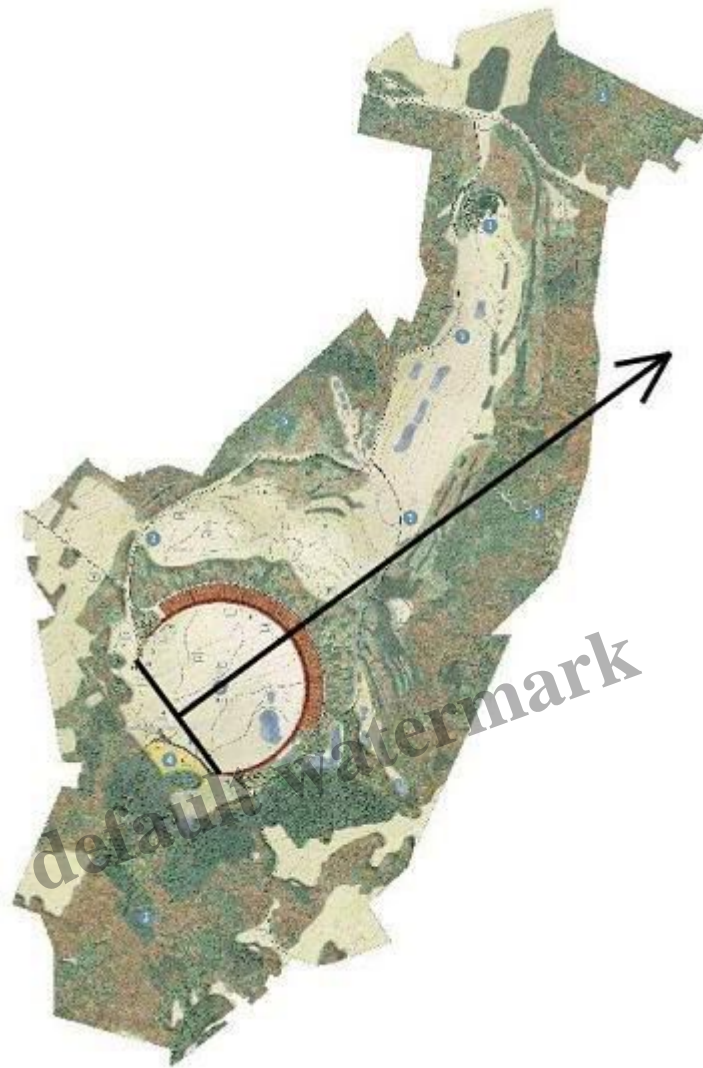
At the Flight 93 crash site, Skyline Road passes through the center of what is to become the giant central crescent of the planned memorial. Enter “Skyline Rd, Shanksville PA” into the QiblaLocator search box and it generates this map:



Red line points to Mecca. (Azimuth, also in red: 55.19° clockwise from north.)

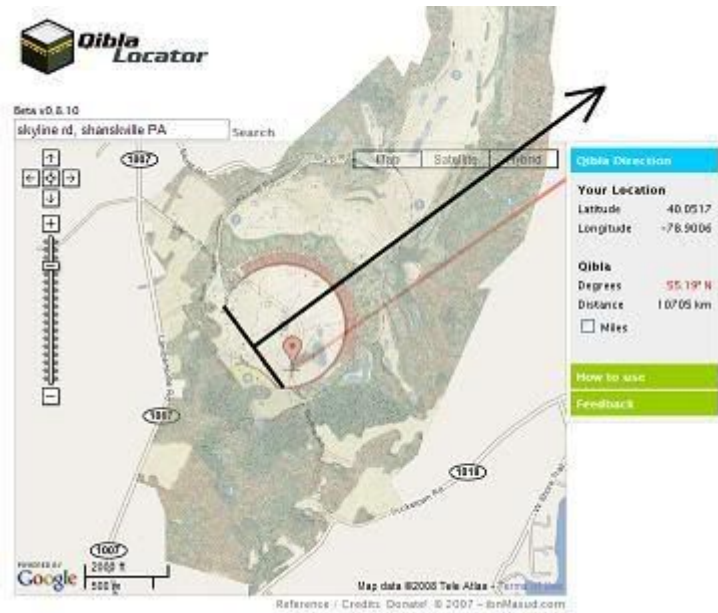
To see how this direction to Mecca compares with the orientation of the planned memorial, first impose

some orientation lines on the Crescent of Embrace design:



The short black line connects the two most protruding tips of the half-mile wide central crescent. The long black arrow shows the orientation of a person standing between the crescent tips and facing into the center of the crescent. (Every particle of this original design remains completely intact in the so-called redesign, which only disguises the giant crescent with a few additional trees.)

Next just lay the site-plan graphic on top of QiblaLocator's Google map:



The red and black lines are almost parallel.

To be precise, the upper crescent tip is the end of the thousand foot long, fifty foot tall, Entry Portal Wall. The bottom crescent tip is the last pair of red maple trees at the bottom end of the crescent walkway. Connect these tips, and the perpendicular bisector (black arrow) points 53.5° clockwise from north (within two degrees of the exact direction to Mecca).

A crescent that Muslims face into to face Mecca is called a [mihrab](#), and is the central feature around which every mosque is built. The Flight 93 Memorial will be the world's largest mosque.

Earlier Mecca direction graphics

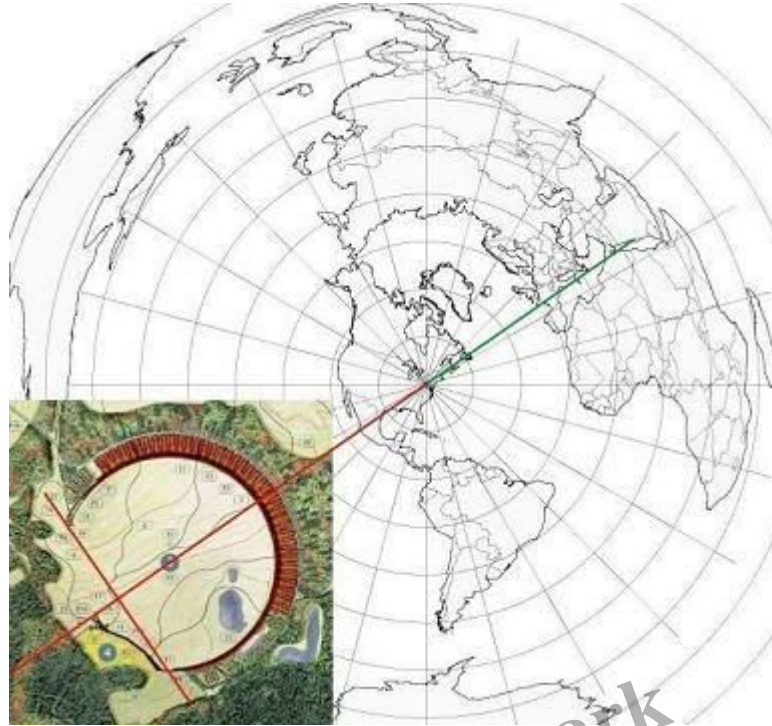
In 2005, Sarah Wells constructed a somewhat [similar graphic](#). She used the Mecca direction calculator at [Islam.com](#) to get a qibla line that she superimposed onto the memorial site plan:



Green “qibla” circle shows direction to Mecca from nearby Pittsburgh. Again you can see that a person standing between the tips of the crescent and facing into the center of the crescent will be facing almost exactly at Mecca.

Sarah’s graphic and the QiblaLocator graphic both demonstrate that the giant crescent points to Mecca *in the way that Muslims define the direction to Mecca* (by the “great circle” or “shortest distance” method).

The first graphic to show the Mecca orientation of the crescent memorial was posted by the pseudonymous [Eaotin Shrdlu](#) on September 10, 2005, two days after the crescent design was [unveiled](#) :



The large map projection and the small site-plan inset both have north at the top. Etaoin's graphic shows that direction to Mecca from crash site (green line) and direction of person facing into crescent (red line) are the same.

University of Pennsylvania Professor Tim Baird, a member of the Flight 93 Advisory Commission, [says](#) that everyone involved in the Memorial Project is fully aware of the factual accuracy of the Mecca direction claim. Nevertheless, they all stand by as Project spokesmen keep denying the Mecca orientation in the newspapers. The Project even found an academic fraud to tell the press that there is no such thing as the direction to Mecca:

Daniel Griffith, a geospatial information sciences professor at the University of Texas at Dallas, said anything can point toward Mecca, because the earth is round. (Pittsburgh *Post Gazette*, [August 18, 2007](#).)

Any Muslim would have denied this absurdity, but the *Post Gazette* does not want Griffith's fraud exposed, because the *Gazette* itself has been fully complicit in covering up the Mecca orientation of the memorial since 2005. *Post Gazette* reporter Paula Ward told Alec Rawls in 2006 ([download 3, p. 108](#)) that editors and reporters at the *Post Gazette* saw all of the demonstrations of the Mecca orientation of the giant crescent back in 2005 and made a top level editorial decision not to publish this explosive information. Editor Tom Birdsong thinks it would hurt the Democrats, so he is not going to publish it, and neither are other newspapers.

This shouldn't be a right-left issue, but try telling our newspaper editors that. Which leaves it up to the rest of us to get the word out about Islamic and terrorist memorializing symbolism in the Flight 93 Memorial. This is going to have to be passed person to person.

You can help. To join our blogbursts, email Cao (caoilfhionn1 at gmail dot com) with your blog's url.

[1389 Blog – Antijihadist Tech](#)
[A Defending Crusader](#)
[A Fine Line Between Stupid and Clever](#)
[Al Salibiyyah](#)
[And Rightly So](#)
[Anne Arundel Maryland Politics](#)
[Big Dog's Weblog](#)
[Big Sibling](#)
[Cao2's Weblog](#)
[Cao's Blog](#)
[Dr. Bulldog and Ronin](#)
[Error Theory](#)
[Faultline USA](#)
[Flanders Fields](#)
[Flopping Aces](#)
[Four Pointer](#)
[Freedom's Enemies](#)
[Ft. Hard Knox](#)
[GM's Corner](#)
[Hoosier Army Mom](#)

[Ironic Surrealism II](#)
[Jack Lewis](#)
[Jihad Press](#)
[Kender's Musings](#)
[My Own Thoughts](#)
[Nice Deb](#)
[Ogre's Politics and Views](#)
[Papa Mike's Blog](#)
[Part-Time Pundit](#)
[Publius' Forum](#)
[Right on the Right](#)
[Right Truth](#)
[Ron's Musings](#)
[Stix Blog](#)
[Stop the ACLU](#)
[The Renaissance Biologist](#)
[The View From the Turret](#)

default watermark

[The Wide Awakes](#)
[Thunder Run](#)
[Tizona's Weblog](#)
[We Have Some Planes](#)

Category

1. Political

Date Created

March 19, 2008

Author

admin

default watermark